



CURA PERSONALIS PROJECT NEWSLETTER



**A Non-Profit Vocational Program for Transitioning Youth
and Adults with Disabilities**

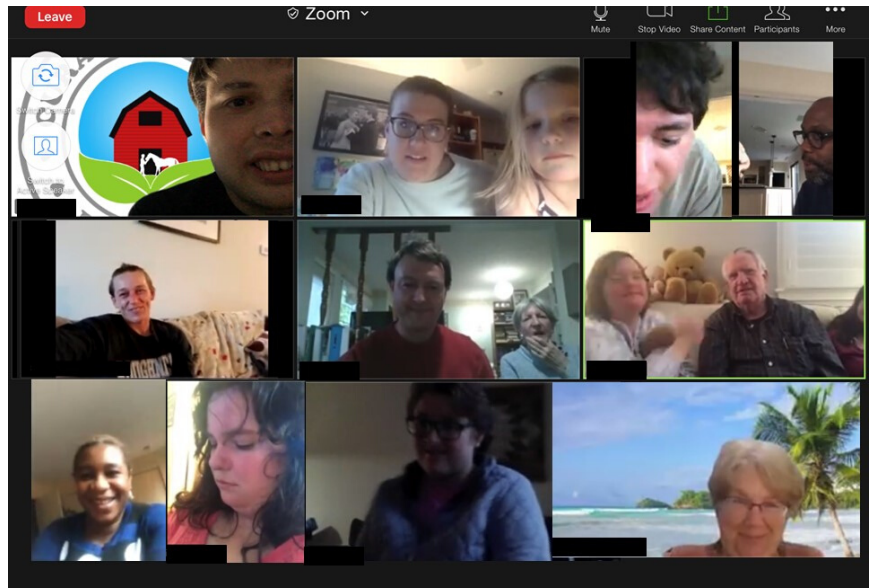


WHAT'S NEW AT CPP:

CPP and Wheaton Park Stables are both currently closed to participants and the public due to the impacts of COVID19. While we did not have any COVID19 cases prior to closing, it was in the best interest of our community's health to follow guidelines and close.

We at CPP are monitoring opening regulations from the State of Maryland and Montgomery County and working with the Stables to implement safety, cleaning, and social distancing procedures to have in place when we can all safely get back to work.

We cannot thank our participants, their families, their staff, and our community enough for your patience during this time.



SPRING PROGRAM UPDATE

After a mild winter this hasn't been the Spring we expected to enjoy together. We hope this newsletter finds you and your family and friends healthy and safe. Instead of an individual feature, we want to feature all of our Participants this quarter! They have all taken a very challenging situation with many bumps in the road, changes to the plan, and disappointments and risen above. We look forward to the day that the whole crew is at the Stables again (hopefully soon!). While we have been closed, we have been holding a weekly Social Zoom. It's the highlight of the week and such a joy to see so many participants, their families, their staff, and some of our friends (Stables staff and even staff who have moved!) jump on to chat each week. It continues to be such a bright spot in a very dark and confusing time, and proves once again that our CPP crew is the best of the best.

In regards to our normal summer programming, CPP's primary focus is to get our adult participants back and working full time after being closed due to COVID19. As of now our Summer June and August Workshops for transitioning youth are on hold. We appreciate your understanding as we navigate this international health crisis and its impact on our community.